

a)

$$F_{13} = 1000 \text{ N ve } F_{14} = 1500 \text{ N}; \phi_3 = 120^\circ; \phi_4 = 35^\circ$$

$$F_{13xy} = -1000u_3 = -1000 * [\cos\phi_3 \quad \sin\phi_3] = [500 \quad -866.02]$$

$$F_{14xy} = -1500u_4 = -1500 * [\cos\phi_4 \quad \sin\phi_4] = [-1228.7 \quad -860.04]$$

b)

$$I_2 = m_2 k_2^2 = 0.18; I_3 = m_3 k_3^2 = 1.36; I_4 = m_4 k_4^2 = 0.585;$$

$$2 \text{ uzvunun atalet kuvveti } F_2^i = (210.98)i + (1196.54)jN$$

$$2 \text{ uzvunun atalet momenti } T_2^i = 0.00$$

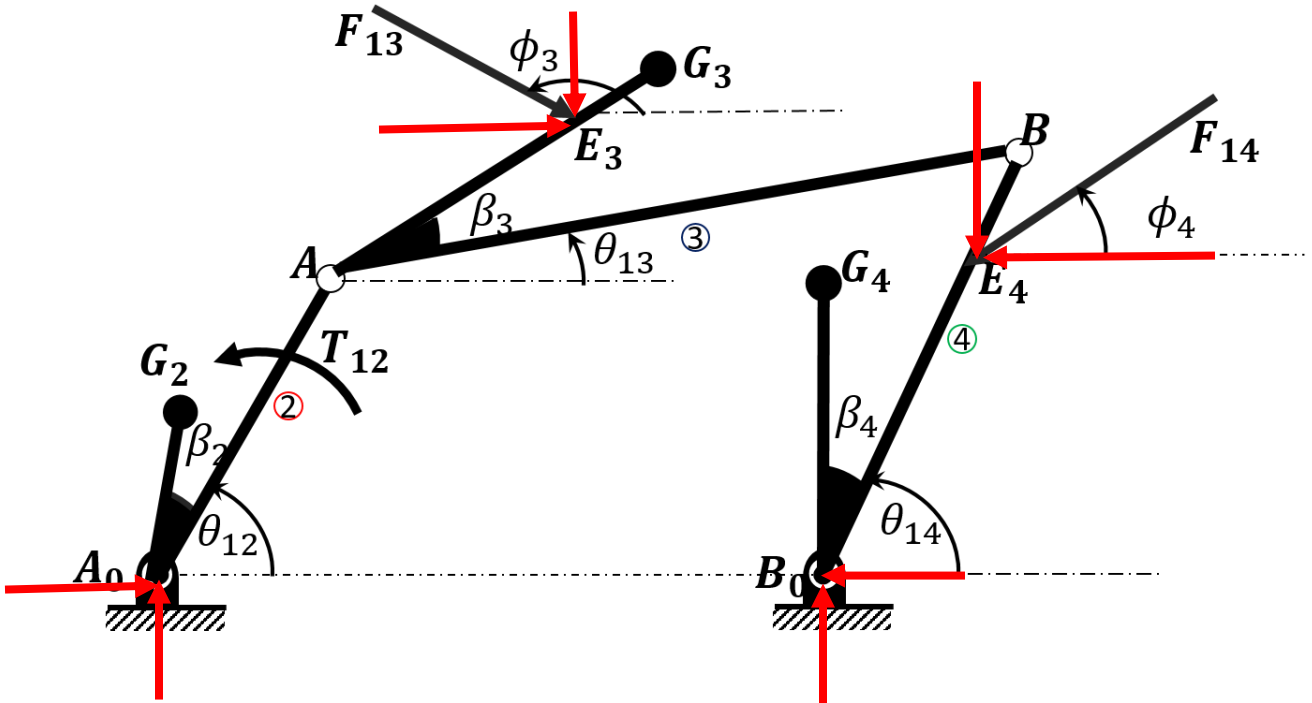
$$3 \text{ uzvunun atalet kuvveti } F_3^i = (2928.31)i + (3305.26)jN$$

$$3 \text{ uzvunun atalet momenti } T_3^i = -294.73 \text{ Nm}$$

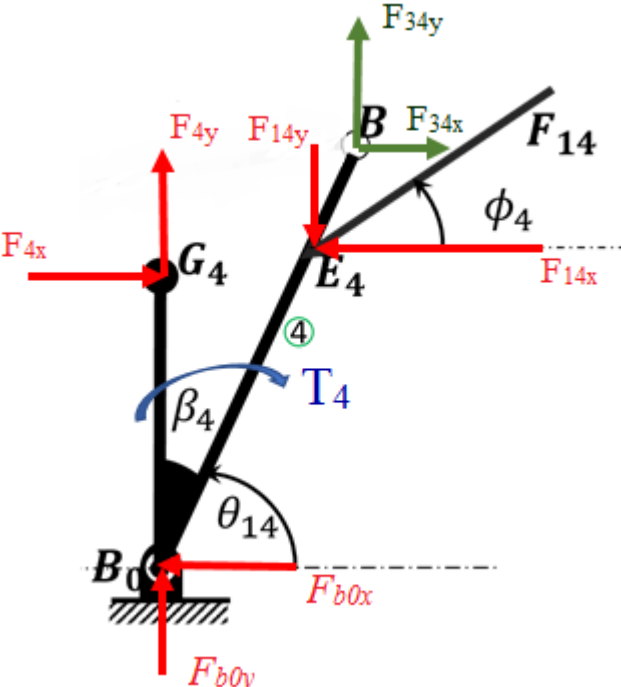
$$4 \text{ uzvunun atalet kuvveti } F_4^i = (847.91)i + (1356.72)jN$$

$$4 \text{ uzvunun atalet momenti } T_4^i = -172.10 \text{ Nm}$$

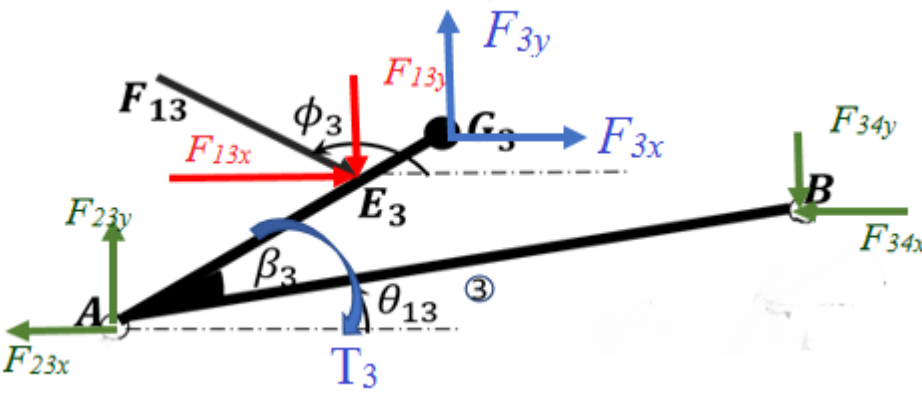
c.)



4.UZUV



3.UZUV



2.UZUV

